



NEW ARRIVALS

visual engineering
LIGHTWARE

Full 4K Matrix Switcher
MX2-16x16-HDMI20
MX2-16x16-HDMI20-Audio



MX2-16x16-HDMI20

The **MX2-16x16-HDMI20** is a member of the Lightware MX2 standalone matrix switcher family that supports uncompromised 4K UHD resolution at 60Hz with RGB 4:4:4 colorspace with down-conversion capabilities to 4:2:0 and is fully HDMI 2.0 compatible.

It has an outstanding port density that makes it particularly suitable for fix-install applications and for future-proof operation centers. It is also a perfect choice for installations where a huge number of HDMI 2.0 compliant input and output ports are required.

This standalone product has 16x HDMI 2.0 inputs and 16x HDMI 2.0 outputs transmitting up to 4K at 60Hz in 4:4:4 format, while supporting 3D, Dolby TrueHD and DTS-HD Master Audio and also HDR 10, HDR12 and Dolby Vision.

This matrix includes proprietary Lightware technologies like Pixel Accurate Reclocking and Advanced EDID Management and can be controlled via the built-in website.

The **MX2-16x16-HDMI20-Audio** is an enhanced version of the same device which also allows embedding audio to, and de-embedding audio from the HDMI stream. Four of its input ports have analog audio connectors for embedding analog stereo audio into the HDMI stream, while eight audio connectors (four connectors next to the output ports, plus four independent audio connectors) can provide de-embedded stereo LPCM audio from any of the inputs for amplifiers and audio systems. The audio-enhanced version of the matrix has no direct selection buttons on the front panel, but only the rotary jog dial button and the color display.

Highlight features

- HDMI 2.0, HDMI1.x and DVI 1.0 compliant
- Supports conversion from 4K UHD at 60Hz 4:4:4 to 4K UHD at 60 Hz YCbCr 4:2:2
- 4K@60Hz with RGB 4:4:4 color space, 18 Gbps bandwidth
- HDCP 2.2 and HDCP 1.4 compliant with cross conversion capabilities
- Fully non-blocking switching architecture with zero frame delay
- Pixel Accurate Reclocking on each input
- Advanced EDID Management
- Built-in website
- RS-232, Ethernet and USB control options
- LCD, push buttons and rotary switch for front panel control
- Front to back cooling airflow
- HDR10 and Dolby Vision support
- Optional redundant power supply with 1:1 redundancy

MX2-16x16-HDMI20-Audio only:

- Analog audio embedding and de-embedding and digital-to-analog conversion of stereo LPCM

Full 4K Matrix Switcher
MX2-24x24-HDMI20
MX2-24x24-HDMI20-Audio



MX2-24x24-HDMI20-Audio

The **MX2-24x24-HDMI20** is a member of the Lightware MX2 standalone matrix switcher family that supports uncompromised 4K UHD resolution at 60Hz with RGB 4:4:4 colorspace with down-conversion capabilities to 4:2:0 and is fully HDMI 2.0 compatible.

It has an outstanding port density that makes it particularly suitable for fix-install applications and for future-proof operation centers. It is also a perfect choice for installations where a huge number of HDMI 2.0 compliant input and output ports are required.

This standalone product has 24x HDMI 2.0 inputs and 24x HDMI 2.0 outputs transmitting up to 4K at 60Hz in 4:4:4 format, while supporting 3D, Dolby TrueHD and DTS-HD Master Audio and also HDR 10, HDR 12 and Dolby Vision.

This matrix includes proprietary Lightware technologies like Pixel Accurate Reclocking and Advanced EDID Management and can be controlled via the built-in website.

The **MX2-24x24-HDMI20-Audio** is an enhanced version of the same device which also allows embedding audio to, and de-embedding audio from the HDMI stream. Eight of its input ports have analog audio connectors for embedding analog stereo audio into the HDMI stream, while eight analog audio connectors at the output ports can provide de-embedded stereo LPCM audio from any of the inputs for amplifiers and audio systems. The audio-enhanced version of the matrix has no direct selection buttons on the front panel, but only the rotary jog dial button and the color display.

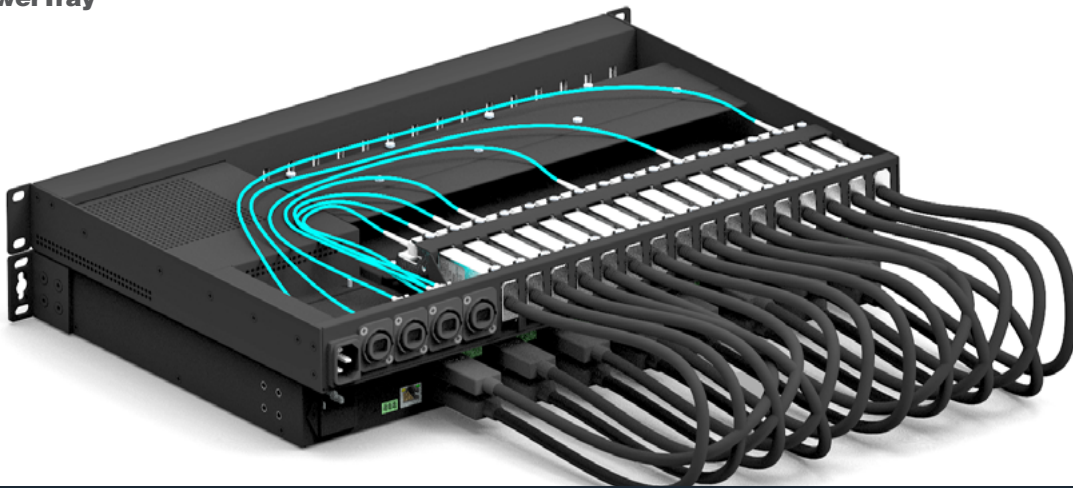
Highlight features

- HDMI 2.0, HDMI1.x and DVI 1.0 compliant
- Supports conversion from 4k UHD at 60Hz 4:4:4 to 4k UHD at 60 Hz YCbCr 4:2:2
- 4k@60Hz with RGB 4:4:4 color space, 18 Gbps bandwidth
- HDCP 2.2 and HDCP 1.4 compliant with cross conversion capabilities
- Fully non-blocking switching architecture with zero frame delay
- Pixel Accurate Reclocking on each input
- Advanced EDID Management
- Built-in website
- RS-232, Ethernet and USB control options
- LCD and rotary switch for front panel control
- Front to back cooling airflow
- HDR10 and Dolby Vision support
- Optional redundant power supply with 1:1 redundanc

MX2-24x24-HDMI20-Audio only:

- Analog audio embedding and de-embedding and digital-to-analog conversion of stereo LPCM

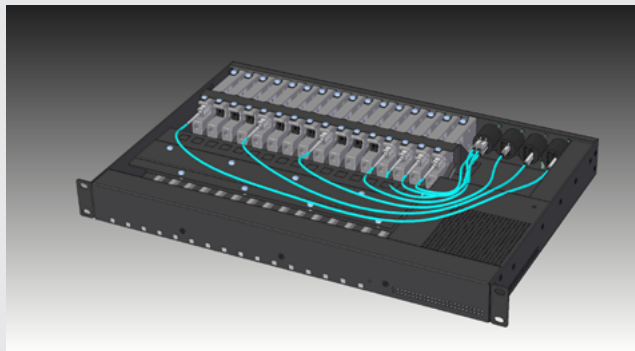
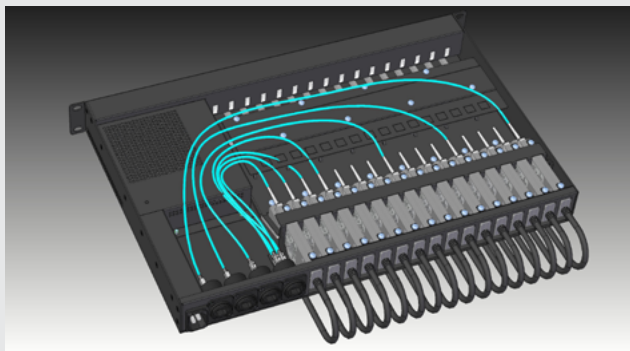
Rack-mountable PowerTray for up to 16x HDMI20-OPTJ-TX/RX90 Optical Extenders
OPTJ PowerTray



Combine an **MX2-8x8-HDMI20-Audio** matrix with a fully populated rack tray to create a **Full 4K HDMI 2.0 optical matrix**.



+16x



The PowerTray is a 1RU size housing accessory which can enclose up to 16 HDMI20-OPTJ-TX/RX90 units, also providing power source for every installed device. The optical fibers are connected to the four Neutrik OpticalCON Quad connectors, each carrying four signal fibers from four of the extenders. The HDMI tail cables of the extenders are accessible directly at the back of the PowerTray.

HDMI 2.0 optical matrix assembly: by connecting the HDMI connectors outputs of the fully populated PowerTray with the input and output ports of an MX2-8x8-HDMI20-Audio matrix a HDMI 2.0 optical matrix system can be created with Full 4K UHD at 60 Hz 4:4:4 maximum resolution.

Features

- 1RU size mounting
- Universal full range AC input with standard C14 socket
- Protections: Short circuit / overload
- 3 years warranty
- The extender units can be freely added or removed by users, TX and RX units can mix in any combination in the tray
- 4x Neutrik OpticalCON Quad OR 8x SC Duplex connectors
- Noiseless passive cooling
- Status LED lights on the units are mirrored to the front panel of power tray
- +1 status LED for 5V DC power feedback
- Powering USB port protection: in case a USB port fails the rest of the units keep on working
- Uniquely designed optical and USB cable management
- Optical cables within the power tray are numbered for easy identification and installation

Rack-mountable PowerTray for 16x VINX Units PRC-16-205

Back view



Front view

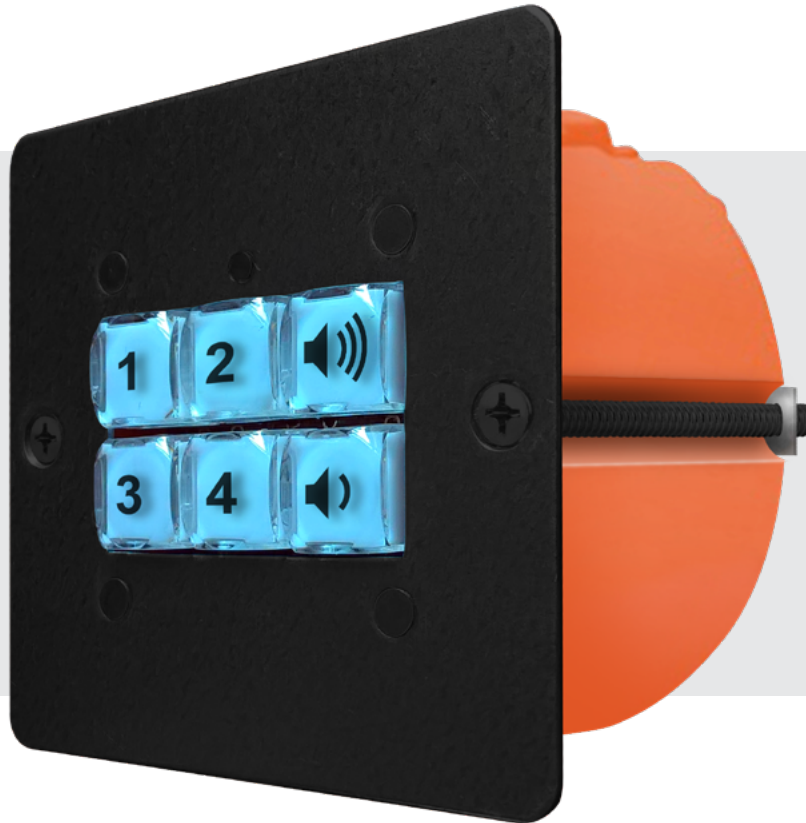


PRC-16-205 is a rack mount cage accessory enclosing up to 16x VINX-120-HDMI-ENC or VINX-110-HDMI-DEC units in any combination, also providing power source for every installed device. Reliable, safe and secure operation is assured by numerous built-in protections against short circuits and overloads.

Highlight features

- 3RU size rack mount cage
- Universal full range AC input with a standard C14 socket
- Protections: Short circuit and Overload
- Users can easily install and remove VINX devices and mix encoders and decoders in any combination
- Vinx units can also be installed in the PRC-16-205 reversed
- Noiseless passive cooling
- Powering port protection: in case a power port fails, the rest of the installed VINX units keep on working
- 3 years warranty

**6x GPIO Trigger Button Panel for Event Manager Built-in Control
TBP6**



TBP6 trigger button panel was designed to be used with the Event Manager built-in control feature in select Lightware matrix switcher and extender products.

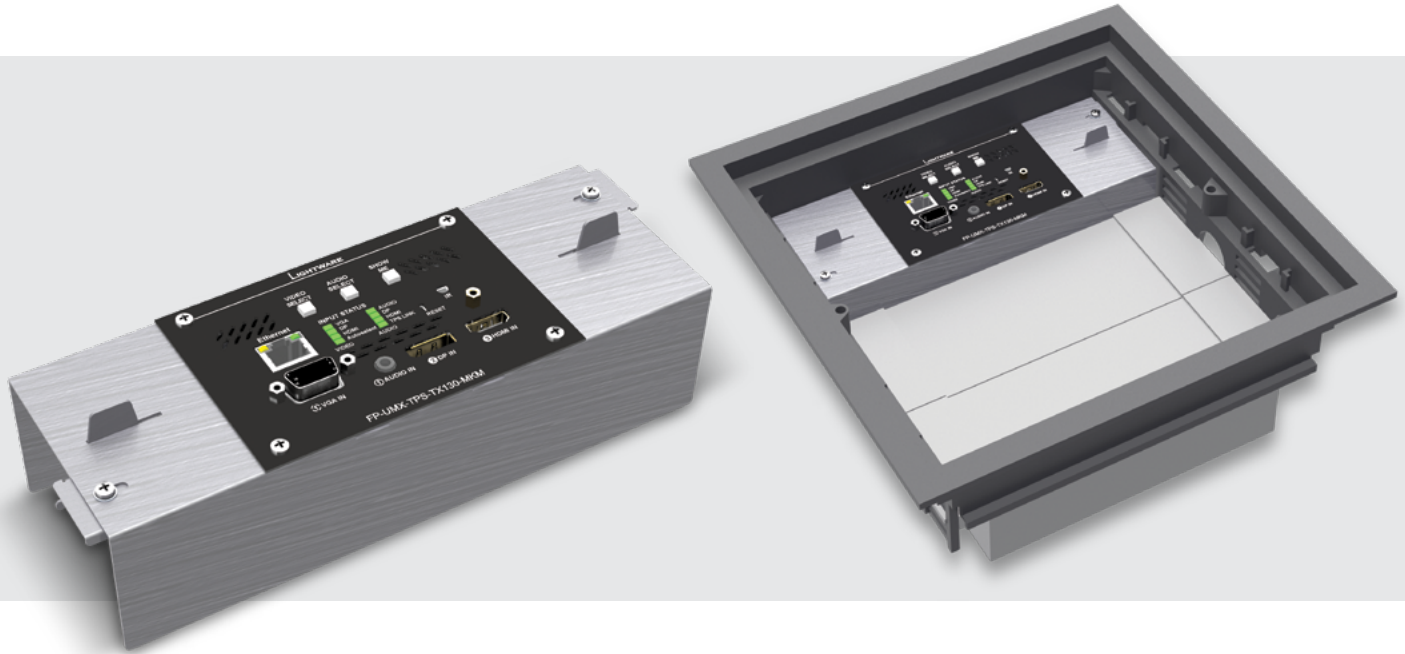
The button panel can be installed in meeting rooms to perform basic system control actions like input selection, switching the system on/off, increasing or lowering the volume, etc.

This product has a status LED and a backlight, which are fed from the 7th pin of the GPIO connector. The backlight can be switched off, or its intensity can be set to two levels with the help of traditional jumper switches.

Features:

- 6x button panel to trigger events in Event Manager control configurations
- 8-pole Phoenix connector (7x GPIO + GND)
- Mountable to wall
- Status LED and backlight fed from 7th pin on GPIO
- Available in black and white colors

**Multiport TPS (HDBase™) Transmitter with Built-in Event Manager
FP-UMX-TPS-TX130-MKM**



The FP-UMX-TPS-TX130-MKM Black is a flagship model in the Lightware TPS (HDBase™ Transmitter) product family. The device can transmit universal video, audio and control up to a 170 meter distance over a single CAT cable in dynamically changing environments such as small board rooms and classrooms. The extender was designed to handle digital and analog video and audio signals: VGA, YPrPb, HDMI 1.4 and DP 1.1 with analog stereo audio from local inputs or embedded 7.1 HBR audio.

Features:

- HDBase™ compatible TPS transmitter wallplate
- 4K / UHD (30Hz RGB 4:4:4, 60Hz YCbCr 4:2:0) and 3D capabilities
- Extends HDMI, DisplayPort or VGA + Ethernet + RS-232 + IR over a single CAT5e-CAT7e cable to up to 170 m distance*
- Event Manager built-in control application
- Advanced EDID Management forces the required resolution from any video source and fixes the output format conforming the system requirements
- Frame detector
- Audio and video connectors: HDMI, VGA, DisplayPort, Stereo jack
- 10/100 Ethernet transmission
- Bi-directional RS-232 and IR, RS-232 supports command injection
- HDCP compliant, CEC, EDID transparent
- Active cooling
- Local audio embedding
- Also available in white colour
- Remote (PoE) or local power source

*Depends on cable category and quality

Tel: +36 1 255 3800 | sales@lightware.com | www.lightware.com

2018

visual engineering
LIGHTWARE